

MONTHLY MEMBERSHIP PROGRESS REPORT

District 321B2

Results as of: 3/31/2026

GMT:

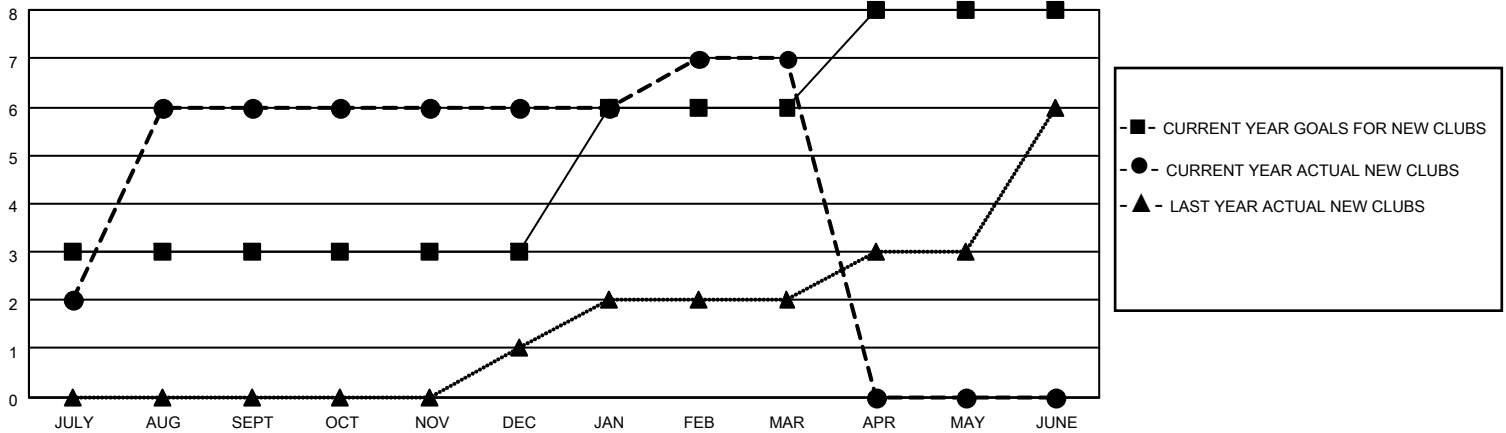
LOCATION INDIA

GMT CA

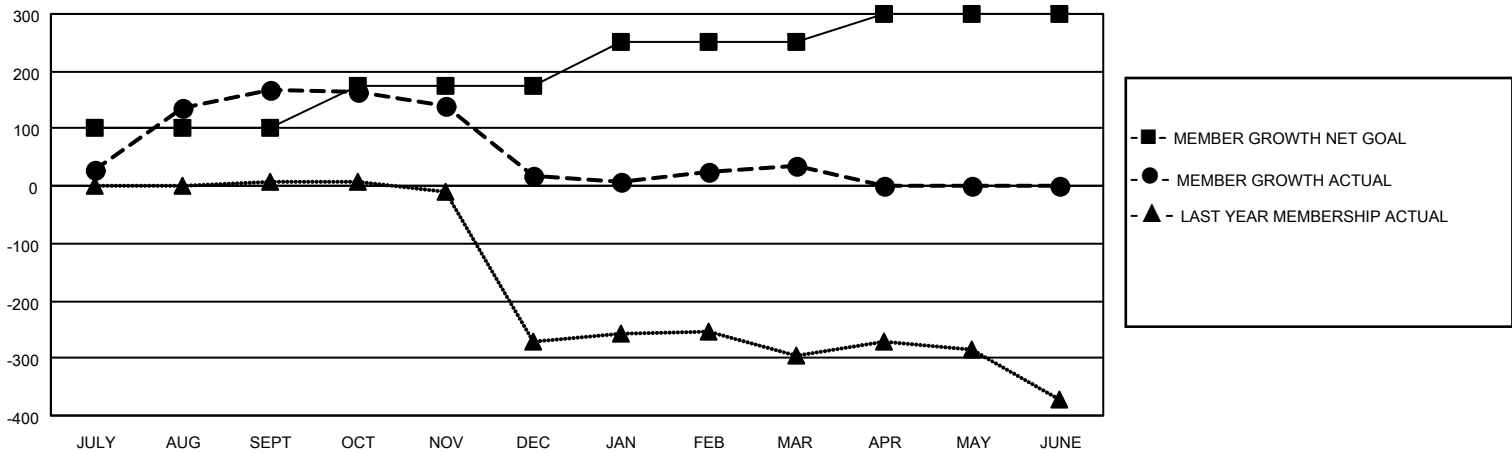
Clubs			
RESULTS FOR 2025-2026			
QUARTER	NEW CLUB GOAL	NEW CLUBS	DROPPED CLUBS
JULY/AUG/SEPT	3	6	0
OCT/NOV/DEC	0	0	4
JAN/FEB/MAR	3	1	0
APR/MAY/JUNE	2	0	0

Members			
RESULTS FOR 2025-2026			
QUARTER	MEMBER GROWTH NET GOAL	MEMBER GROWTH ACTUAL	DROPPED MEMBERS ACTUAL (including transfers)
JULY/AUG/SEPT	100	253	50
OCT/NOV/DEC	75	61	202
JAN/FEB/MAR	75	38	19
APR/MAY/JUNE	50	0	0

GOALS AND ACTUAL NEW CLUBS CUMULATIVE



GOALS AND ACTUAL MEMBERS CUMULATIVE



DROPPED CLUBS: 4

46 CLUBS OF 72 ADDED 1 OR MORE NEW MEMBERS

GENDER DISTRIBUTION

MALE 1,037 (67.73%)
FEMALE 494 (32.27%)

DROPPED MEMBERS

DECEASED	2
CLUB CANCELLED	64
OTHER	204
TOTAL	270

[CLICK HERE FOR CUMULATIVE MEMBERSHIP DATA](#)

TOTAL FAMILY UNIT MEMBERS	471
FAMILY MEMBERS PAYING HALF DUES	262